

**Pax-8**  
**Rabbit Monoclonal antibody(Mab)**  
**Catalog # AD80244**

## Specification

---

### Pax-8 - Product info

|                   |                        |
|-------------------|------------------------|
| Application       | <b>IHC-P</b>           |
| Primary Accession | <a href="#">Q06710</a> |
| Reactivity        | <b>Human</b>           |
| Host              | <b>Rabbit</b>          |
| Clonality         | <b>Monoclonal</b>      |
| Calculated MW     | <b>48218</b>           |

### Pax-8 - Additional info

|                                |             |
|--------------------------------|-------------|
| Gene ID                        | <b>7849</b> |
| Gene Name                      | <b>PAX8</b> |
| <b>Other Names</b>             |             |
| Paired box protein Pax-8, PAX8 |             |

#### Dilution

IHC-P~~Ready-to-use

#### Storage

Maintain refrigerated at 2-8°C

#### Precautions

**Pax-8 Antibody is for research use only and not for use in diagnostic or therapeutic procedures.**

### Pax-8 - Protein Information

**Name** PAX8

**Function**

**Transcription factor for the thyroid-specific expression of the genes exclusively expressed in the thyroid cell type, maintaining the functional differentiation of such cells.**

**Cellular Location**

**Nucleus.**

**Tissue Location**

**Expressed in the excretory system, thyroid gland and Wilms tumors**

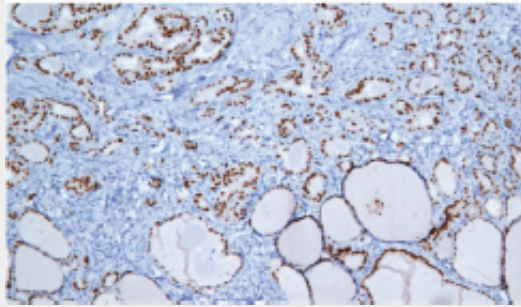
### Pax-8 - Protocols

Provided below are standard protocols that you may find useful for product applications.

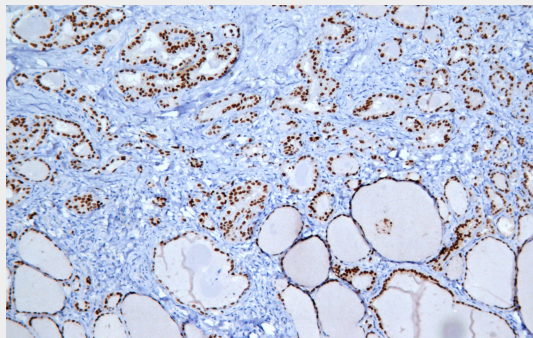
- [Western Blot](#)

- [Blocking Peptides](#)
- [Dot Blot](#)
- [Immunohistochemistry](#)
- [Immunofluorescence](#)
- [Immunoprecipitation](#)
- [Flow Cytometry](#)
- [Cell Culture](#)

## Pax-8 - Images



Papillary thyroid carcinoma,



Immunohistochemical analysis of paraffin-embedded tissue using AD80244 performed on the Abcarta® FAIP-30 Fully automated IHC platform. Tissue was fixed with formaldehyde at room temperature, antigen retrieval was by heat mediation with a EDTA buffer (pH9.0). Samples were incubated with primary antibody (Ready-to-use) for 15 min at room temperature. AmpSee™ Detection Systems [Abcepta:AR005] was used as the secondary antibody.